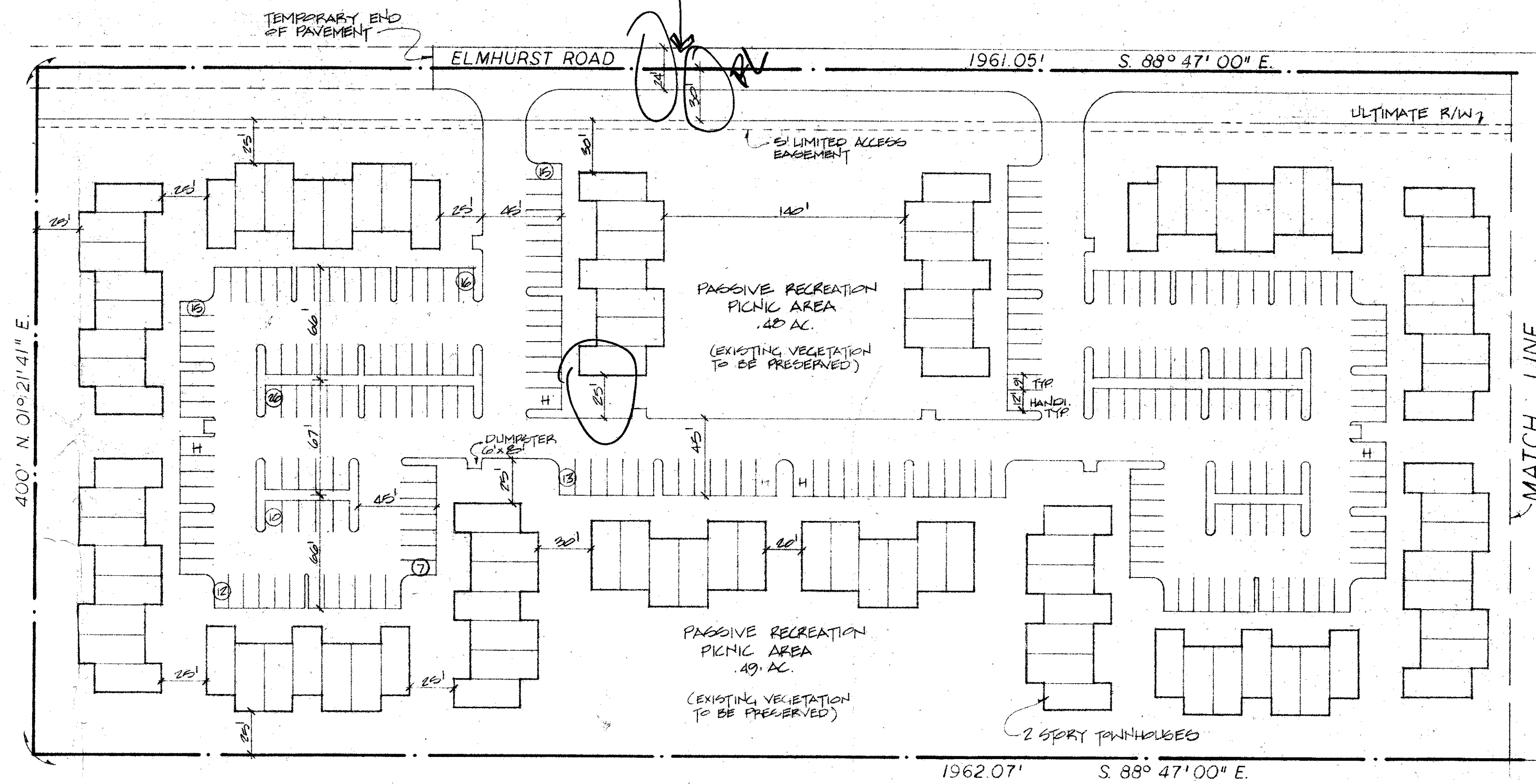
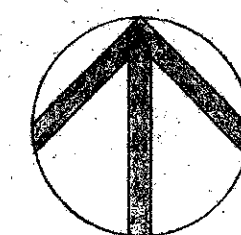
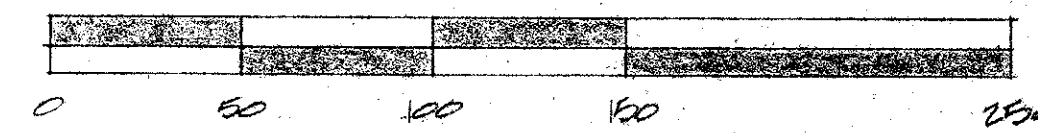


MENENDEZ &
ASSOCIATES
ARCHITECTS
PLANNERS INC.
WEST PALM BEACH
FLORIDA, 33401
(305) 889-0714

SITE PLAN PHASE TWO



HAVERHILL HOMESITES
P.B. 23 , PG. 24



THE COMMONS
PALM BEACH COUNTY, FLA.
PREPARED FOR: JAN A. WOLFE AS TRUSTEE, W. PALM BEACH, FLA.

79011

DRAWN BY	DATE
HALLGREN	6-25-79
REVISIONS	DATE
	7-17-79
SCALE: 1" = 50'	

2 OF 2



ur0275.igr
THE COMMONS SITE PLAN 2 OF 2
PHASE I